



Our history

Our building opened in July 1900 as a combined police, fire and ambulance station. After the fire service left in 1924 it remained in use by South Yorkshire Police until the 1960s.

In the 1970s a group of firefighters took on the task of reorganising and expanding the collection of the original Sheffield Fire Museum, which had begun in 1931. Originally displayed in fire stations around South Yorkshire, the collection soon needed a bigger home and in the early 1980s it was relocated to the then-empty West Bar station.

Since then the collection has grown even further to take in historic objects and vehicles relating to all our emergency services. In 2014 the expanding scope of our museum was reflected when we relaunched as the National Emergency Services Museum.

Find out more about the history of our amazing building during your visit; look out for the circular signs around the museum.

Enjoyed your visit?

There are lots of ways to keep exploring NESM all year round.

Have you upgraded your ticket to an annual pass? You can do so today at no extra cost and come back to see us as much as you like for the next 12 months – for free!

Your pass also covers entry to some of our special events including the ever-popular Wartime Christmas, and we offer a host of other activities for kids and adults throughout the year. Find out more on the 'What's on' page of our website.

Did you know you can also visit the museum with your school or community group? We provide tailored visits for groups from 15 to 150, offering everything from self-led tours to workshops exploring topics like the Great Fire of London. Learn more by visiting our website and clicking 'Learning'.

We're also on social media; find us on Facebook, Twitter and Instagram and keep up to date with all the news from NESM. If you're sharing photos from your visit don't forget to tag us and use **#IDiscoveredNESM**.

And finally if you have enjoyed your visit please consider leaving us an online review and help us spread the word about the fabulous fun waiting to be had at NESM!

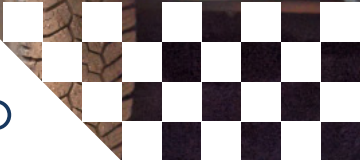
Thank you.

Contact us

0114 2491 999
visitnesm.org.uk
info@visitnesm.org.uk



2021
Museum Map



Discovering NESM...


Second Floor

Today's Emergency Services
Archives and Collection Stores

- ①
- ②





First Floor

Fiery Blaze to Fire Brigades
For King & Country - **COMING SOON!**
Temporary exhibition zone
Learning Rooms
Unisex Toilets

- ③
- ④
- ⑤
- 

Ground Floor

Reception
Gift Shop
Tack Room Coffee Shop
Victorian Police Cells
Daring Detectives & Dastardly Deeds
Police Gallery
Blood, Bandages and Blue Lights
Outdoor Zone
The Blitz
Engine House
Toilets

- 
- 
- 
- ⑥
- ⑦
- ⑧
- ⑨
- ⑩
- ⑪
- 

Access lift to upper floors



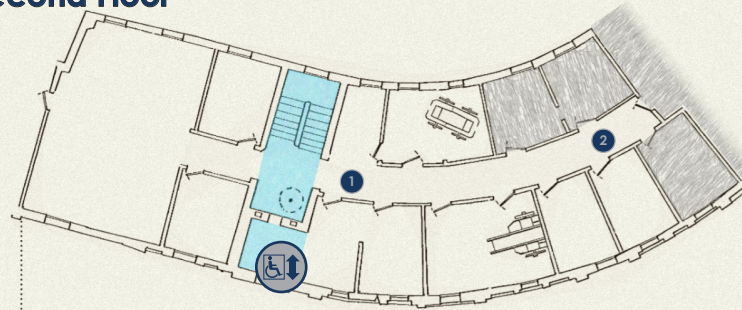
Get hands-on and climb inside some of our vehicles, try on uniforms and have a go yourself. You are welcome to climb on board any vehicle displaying this 'Play' symbol.



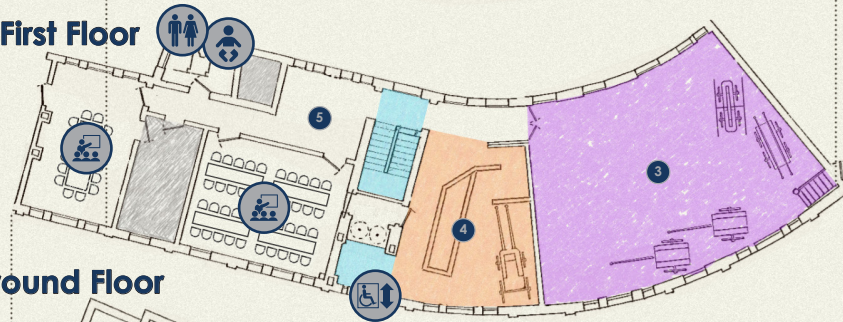
Visitors with sensory needs should note that some of our exhibitions use lights, sounds, smoke and smells.

If you need further assistance please speak to a member of our team.

Second Floor



First Floor



Ground Floor



Lift, stairs and ramps
Alterations to the building have recently been made to improve access including the addition of a lift, ramps and better toilet facilities.

NEW EXHIBITIONS
Discover three new exhibitions created by our team for 2021

COMING SOON
Explore the trenches and the story of the emergency services in WWI